

# Be Captivated

2017



C.R.Kennedy  
& COMPANY PTY. LTD.



**Streamline your office to field processes...**

Peter Madsen



# Introduction

Improving your **office>field>office** workflows and processes



- Data Preparation
- Data Upload
- Field Process
  - Coding / Stringing
  - Object Types
  - Map View
  - Attributing
  - Imaging
  - Scanning
  - Application Updates
- Levelling
- Data Download
- End Deliverables



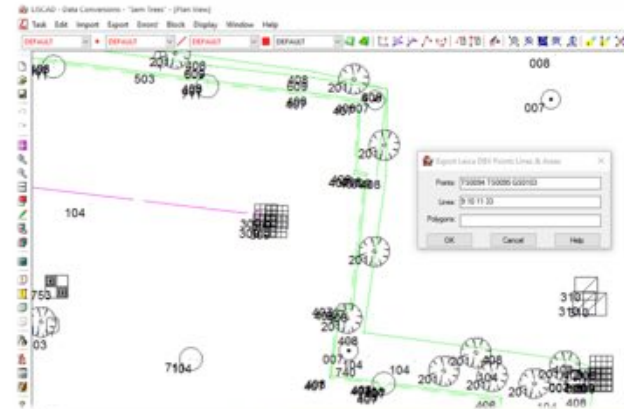
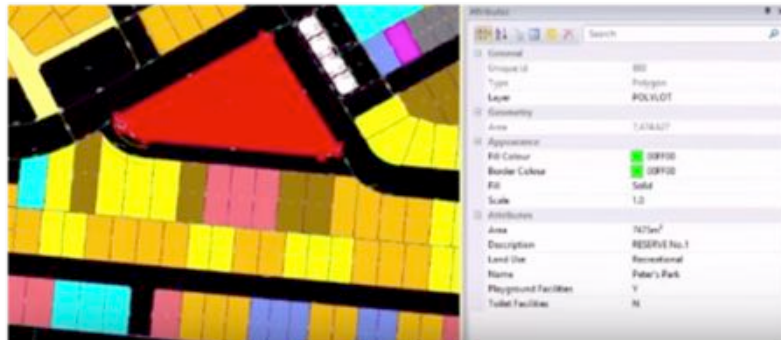
**Leica**  
Geosystems



**C.R. Kennedy**  
& COMPANY PTY. LTD.

# Data Preparation and Upload

- Numerous calc /processing software available
- Use more than a basic ASCII / CSV
- Direct transfer available with intelligent Leica DBX job file
- Utilise XML / HeXML formats for rich data transfer
- Stylesheets and format files available for different softwares
- Upload attributes and images to improve field processes.
- Easy identification of features (pipe diameters, colours, materials etc.)
- Upload and utilise smarter data like background images, DTM's, alignment information etc...



# Leica Exchange



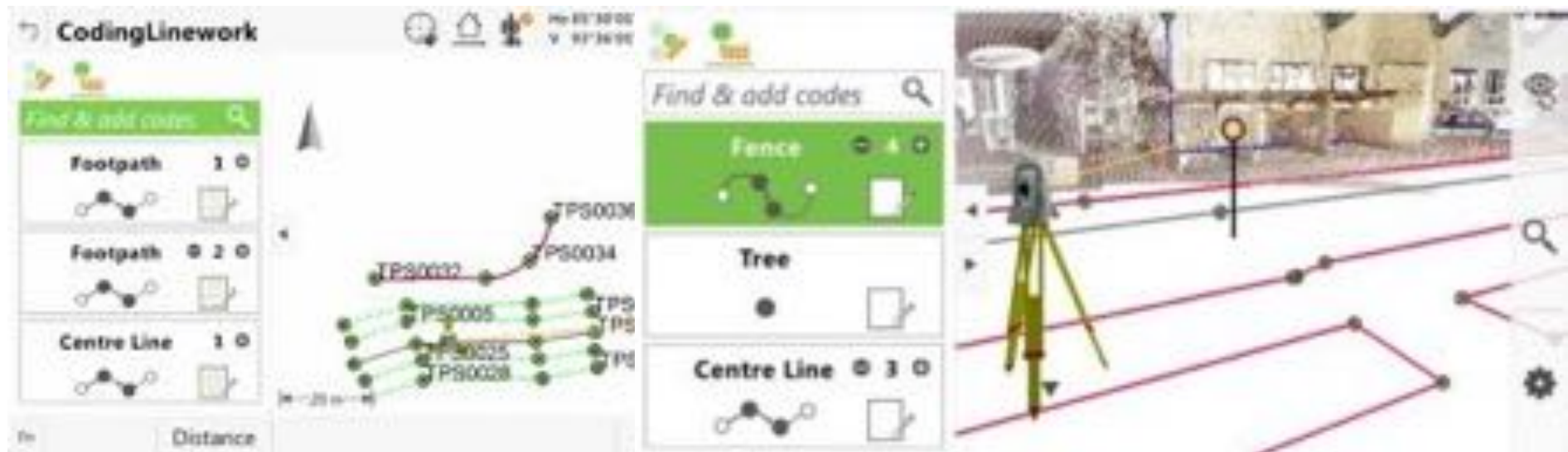
- Transfer your data from and to the field quicker than ever before
- Easy, fast and safe way to optimise productivity
- No size limits to worry about
- Seamless office software integration
  - Easily select data and send it to/from field crew.
  - Don't worry about limited email sizes or FTP systems
- Internet access in the field
  - Hand held controllers with WiFi or SIMs with data
  - Hotspot Instrument to phone or WLAN connection





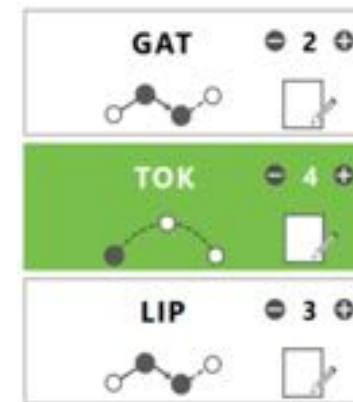
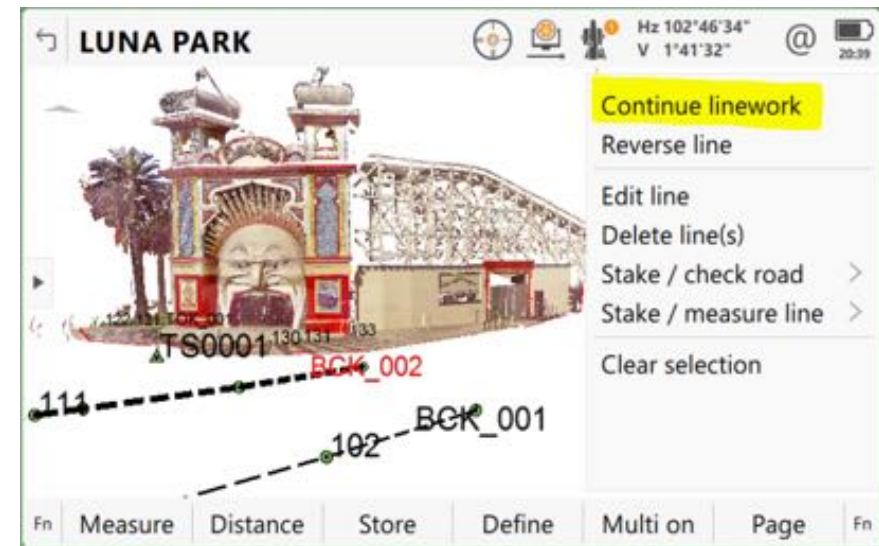
# Coding and Stringing

- Use an intelligent Codelist that matches your office software
- Create and edit Codelists using Neo or Infinity software in the office or in the field with Captivate
- Intelligent Codes have information on what type of features and attributes are associated with them
- Use zig-zag or same direction cross section templates



# Coding and Stringing Continued

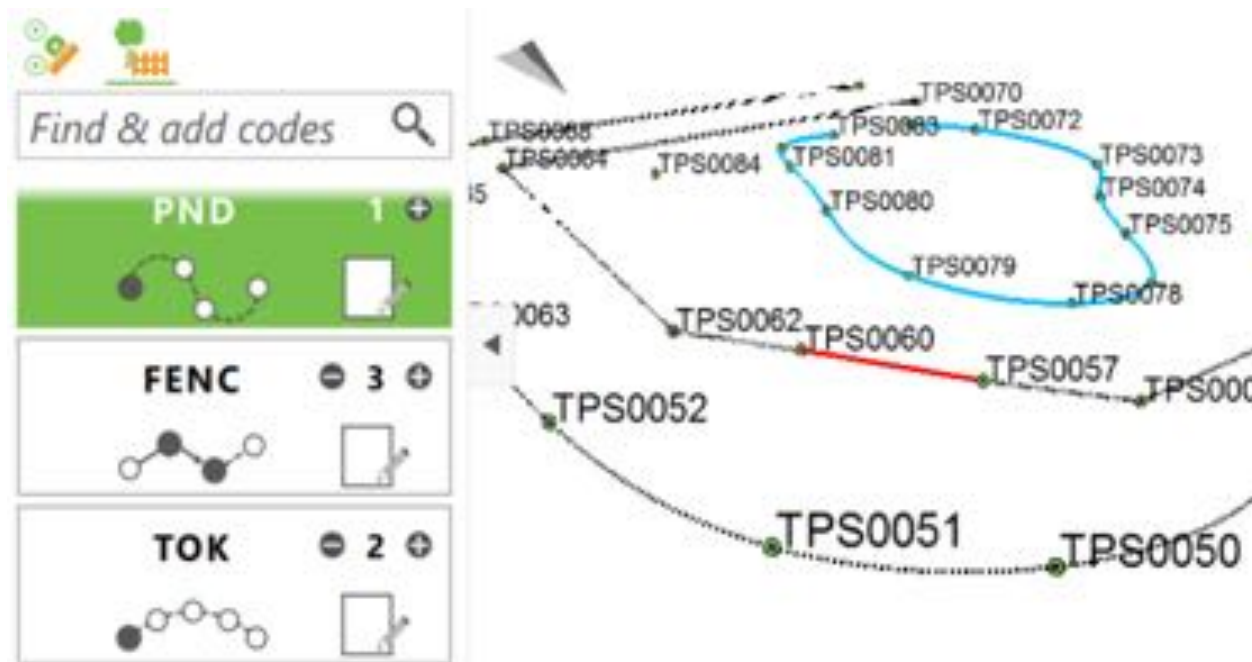
- Utilise the new and simple + - on-board stringing
- Continue linework and strings at the click of a button in the map view
- Use Multiple codes on single points
- Set different codes for points and lines on single feature pickups
- Setup common code field templates to improve feature survey efficiency





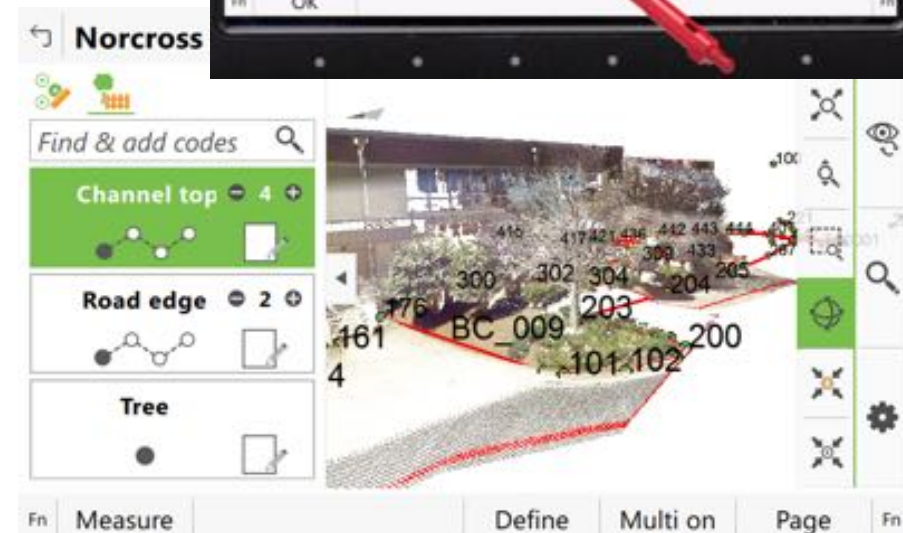
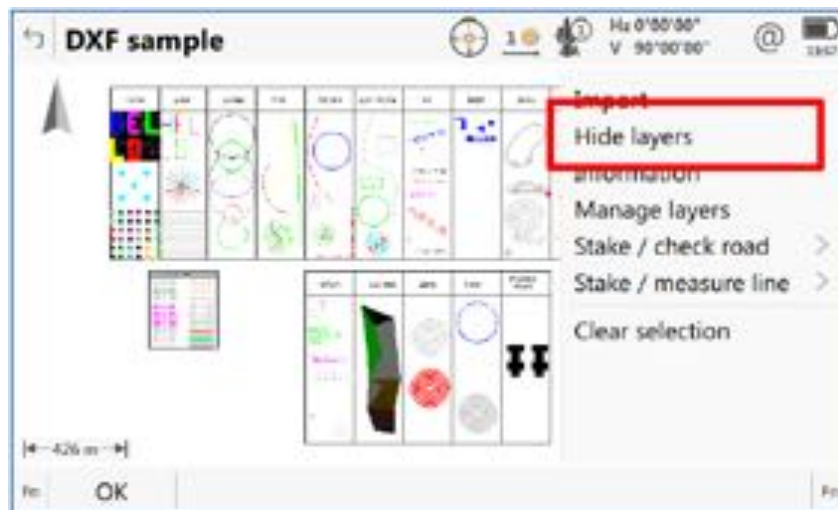
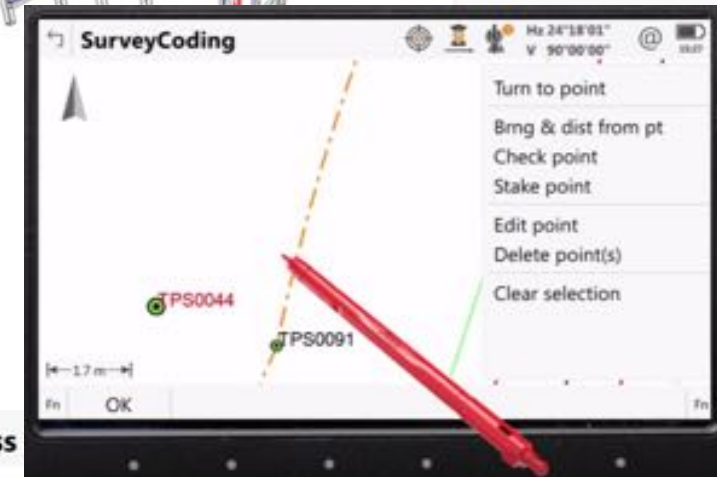
# Feature Types

- Set up your code list to anticipate likely object types
- See stringing for lines, arcs, splines and more develop live in the integrated map view
- Close stringlines, do best fit arcs and much more



# Map View

- Use the 3D map view to immerse yourself in the data like never before
- Stake objects via the map at the click of a button
- Manage your Layers, Annotations, and Object display on board
- Only view what you want to view



# Attributing

- Easy identification of features (pipe diameters, colours, materials etc.)
- Add attribute fields / new codes whilst on the job
- Setup Attribute drop down choice lists
- Set if they are mandatory or optional
- Photo Attributes

**Enter Attributes**

Point code: STN  
Code description: Instrument Stn

Attribute 1	PM324667
Attribute 2	Brass Plaque
Attribute 3	-----

OK New attrib Last Default

**TPS0044**

Coordinates Obs **Code** Annots Images

Point code: Tree  
Code description: Tree Point

Height	12
Canopy	2.5
Type	Oak

Store New attrib Last Default Page

# Images

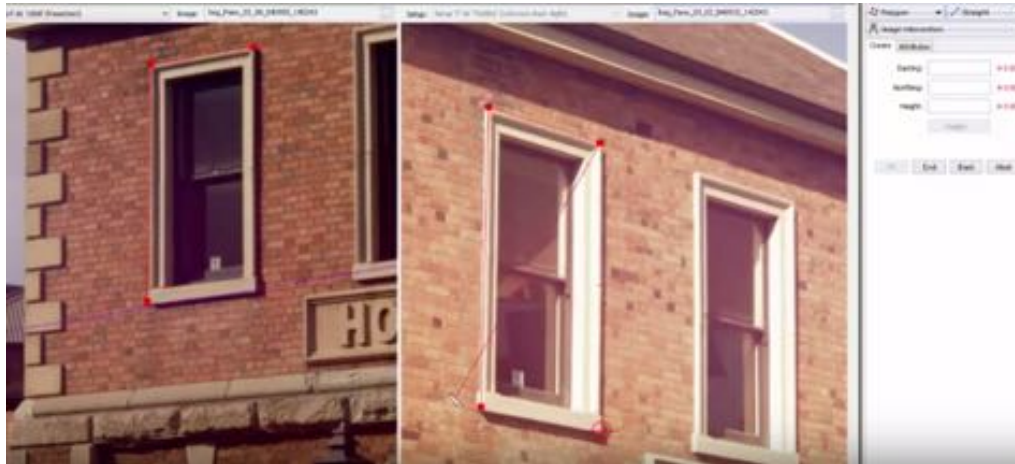
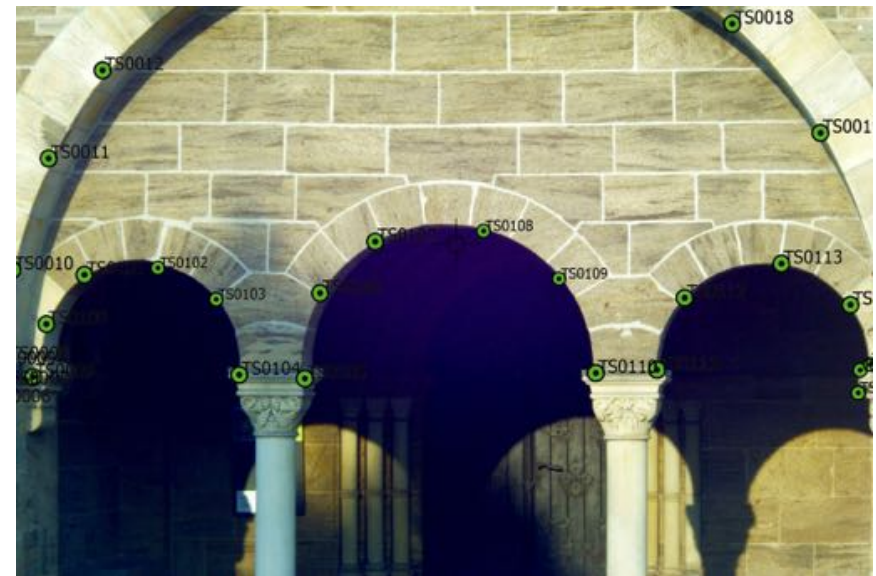
- Utilise imaging capabilities on your instrument and controller
- Step up from non-spatially related pictures off your phone
- Store images as attributes of objects like signs, pits, pipes, buildings to save on lengthy descriptions
- Use as part of your quality control procedures





# Imaging

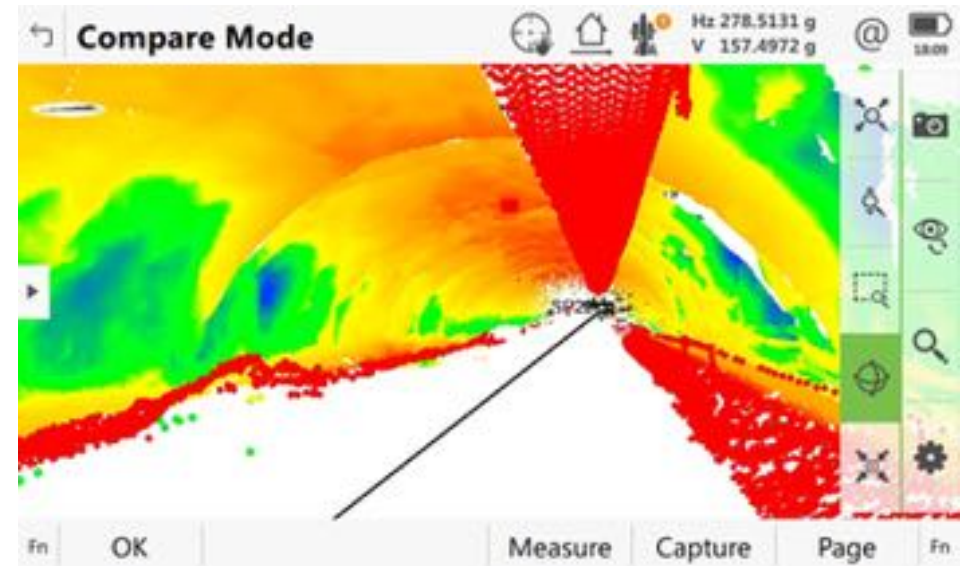
- Utilise imaging on your instrument
- Live imagery is used as a backdrop with your data overlaid
- Use the live image feed to control the telescope and take reflectorless shots
- Take panoramic images at each setup
- Use stereo images to create 3D objects in software like Neo





# Scanning

- Target your scans with by defining your scan area
- Scan point density is fully customisable
- Compare scan data to design data in the field
- In LISCAD process on datum geometry and scan information in one easy step

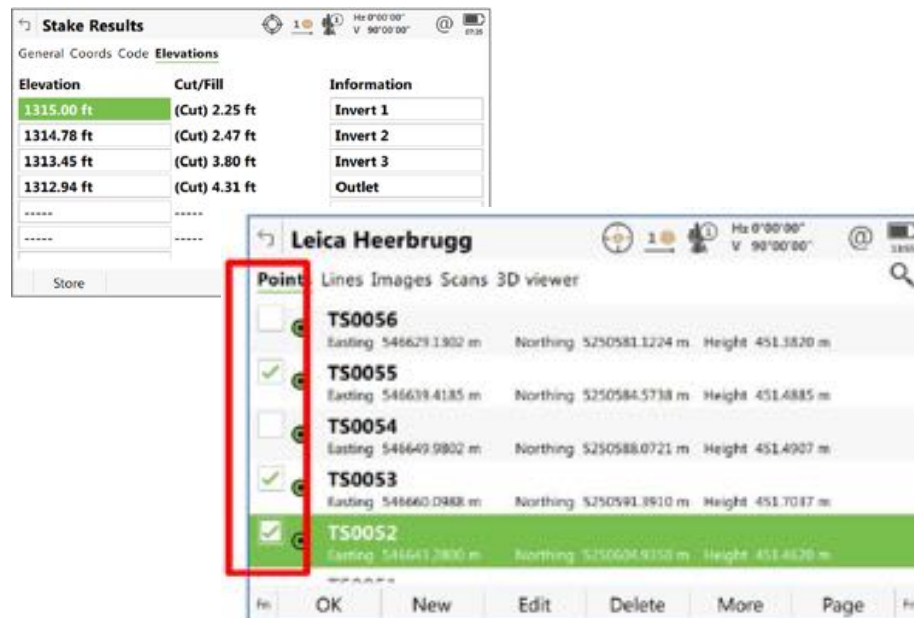


**Leica**  
Geosystems

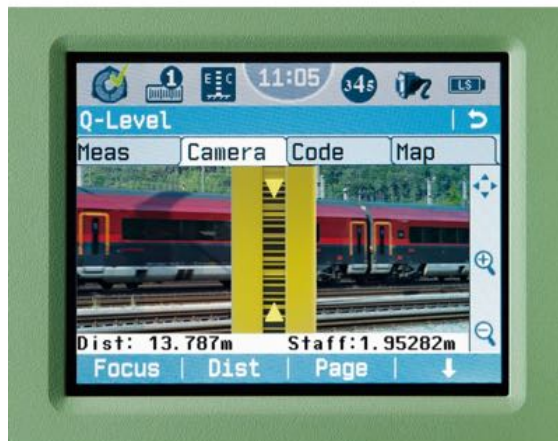
**C.R.Kennedy**  
& COMPANY PTY. LTD.

# Application Updates

- Roads app now has vertical exaggeration
- Use the map view in not only Measure but applications like Measure to Line and Roads
- Delete and edit multiple points in one action
- Enter multiple elevations for staked points
- Job searching and navigation updates







- Quick Setup
- Easy Data Transfer
- Digital Camera Aiming
- Autofocus Efficiency
- Highest Accuracy
- Adjust results in the field or office



# BLK360



- Imaging Laser Scanner
- Lightweight < 1kg
- 3D image point cloud created in Real Time
- Wifi connection to field tablet
- 360,000 points per second
- < 3 minutes for full dome scan
- High definition short-range scanner
- Thermal image sensors

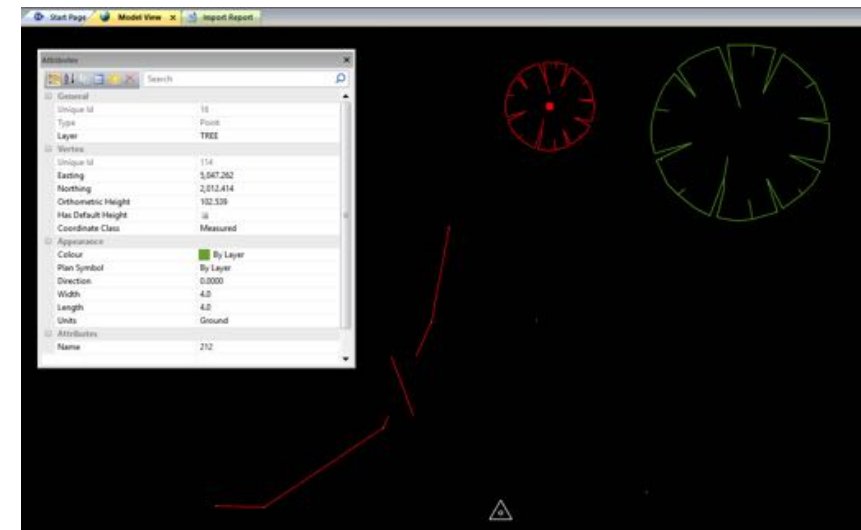
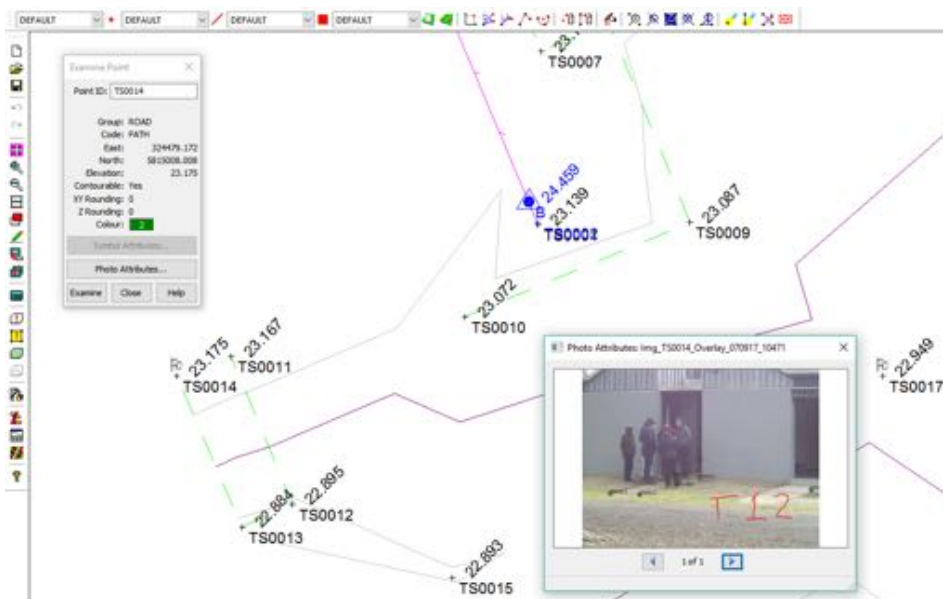


**Leica**  
Geosystems

 **C.R. Kennedy**  
& COMPANY PTY. LTD.

# Data Download and Reduction

- Once again you can use Leica Exchange to quickly send your data from field to office to maximise efficiency
- Direct transfer available with intelligent Leica DBX job file
- If you use the Traverse or Measure Sets apps for control it can be simply extracted to LISCAD's least squares adjustment module
- Use the attributes and images you have stored in the field to add value to you end deliverables





Thank You...



**Leica**  
Geosystems



**C.R. Kennedy**  
& COMPANY PTY. LTD.